



Star Custom Pretest Instructions

Renaissance Learning™ | P.O. Box 8036 | Wisconsin Rapids, WI 54495-8036 | (800) 338-4204 | www.renaissance.com

All logos, designs, and brand names for Renaissance's products and services, including, but not limited to, Accelerated Math, Accelerated Reader, Accelerated Reader 360, AccelScan, English in a Flash, MathFacts in a Flash, Renaissance, Renaissance Flow 360, Renaissance Growth Platform, Renaissance Growth Alliance, Renaissance Learning, Renaissance-U, Renaissance Smart Start, Star, Star 360, Star Custom, Star Early Literacy, Star Early Literacy Spanish, Star Math, Star Math Spanish, Star Reading, Star Reading Spanish, and Star Spanish are trademarks of Renaissance Learning, Inc. All other product and company names should be considered the property of their respective companies and organizations.

Before you begin testing, please check the following:


- Explain the test to your students. The Pretest Instructions will walk you through a basic orientation with your students.
- Cover or remove any materials on the walls, whiteboards, and other areas that might help students answer the test items.
- Make sure there is enough light and ventilation in the test area.
- Make sure the area is free from noise. Try to avoid distracting locations or times when other students, school bells, or public address announcements can interfere with student concentration.
- We recommend enabling “full screen” mode on your browser to ensure no scrolling is required. Browsers with customizations (bookmark tabs, extensions, etc.) and low-resolution screen settings result in a smaller available space which could result in needing to scroll to see the **Next** button during testing.
- If you are administering the test with a tablet computer, make sure the battery is adequately charged.
- Check the setting of the Star Custom Dates and Times Preference to make sure students will be able to take the test: <https://help2.renaissance.com/prefs/21036>.



Please read these instructions to your students before they take a Star Custom test. (You can use the enclosed materials to make handouts if you think it will help your students understand the test format.) Read each section aloud exactly as it is printed so that students know what to expect at each stage of the test.

To help your student understand the test format, use pages 8–14 of this document to make handouts.

Taking a Test

- 
- Student logs into Renaissance.
 - Student selects a Star Custom Test (a “Skill Check” assignment) in the Assignments list on the Home page.
 - Student answers test questions.
 - Student finishes test.
 - If no hand scoring is required, student can review test results.
Reviewing Star Custom Tests: <https://help2.renaissance.com/STARC/ReviewTest>.
 - Teacher can review a student’s test results immediately; if necessary, teachers can hand-score test items and edit test scores.
*Hand Scoring: <https://help2.renaissance.com/STARC/1500>.
Editing Scores: <https://help2.renaissance.com/STARC/1600>.*
- Teachers can also use reports and dashboards to review Star Custom test results.
*Visit <https://help2.renaissance.com/STARC>. In the contents for Star Custom Help, select **Reports**.*

Read to students

You are going to take a test called Star Custom. There are two types of questions that may appear in this test: multiple-choice and constructed-response.

Do not worry about how many questions you think you get right, or how many you think you get wrong. Everyone will probably miss some of the questions. The main goal is for you to do the best you can.

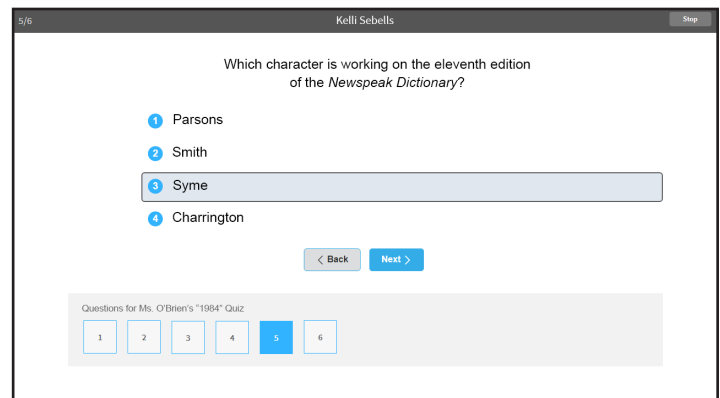
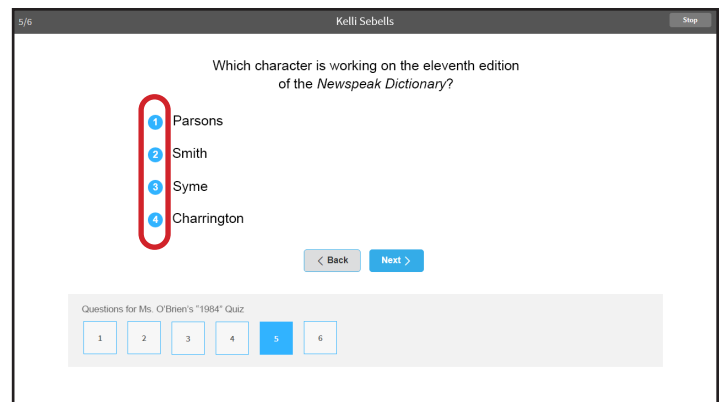
Picture 1

This is what a multiple-choice question looks like.

Read the text, and then select your answer from the responses listed.

- **Tablet:** Tap on the answer you have chosen.
- **Mouse:** Click on the answer you have chosen.
- **Keyboard:** Press the number (**1, 2, 3, or 4**) that is next to the answer you have chosen.

Once you select an answer, it will be highlighted on the screen. This does not mean you have selected the correct answer; this only shows which answer you have selected.

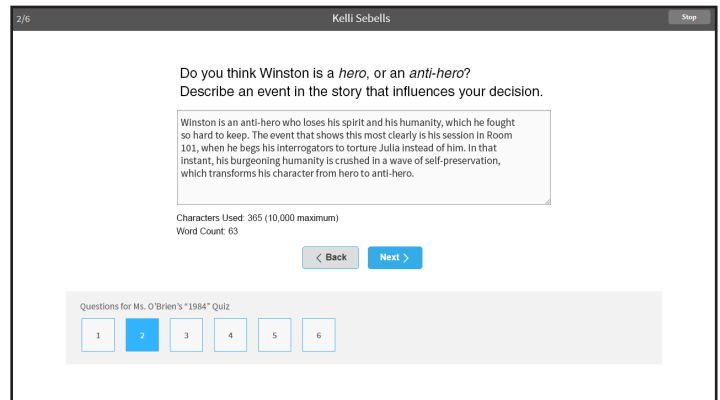
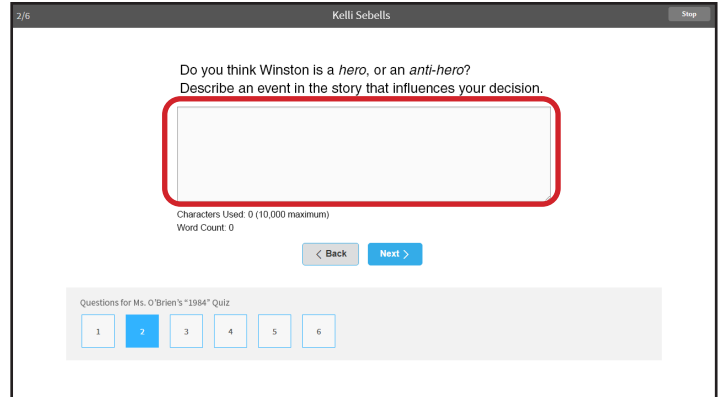


Picture 2

This is what a constructed-response question looks like.

Read the text, and then type your answer in the blank space provided.

- **Tablet:** Use the tablet’s on-screen keyboard to type your answer.
- **Keyboard:** Use the computer’s keyboard to type your answer.



Picture 3

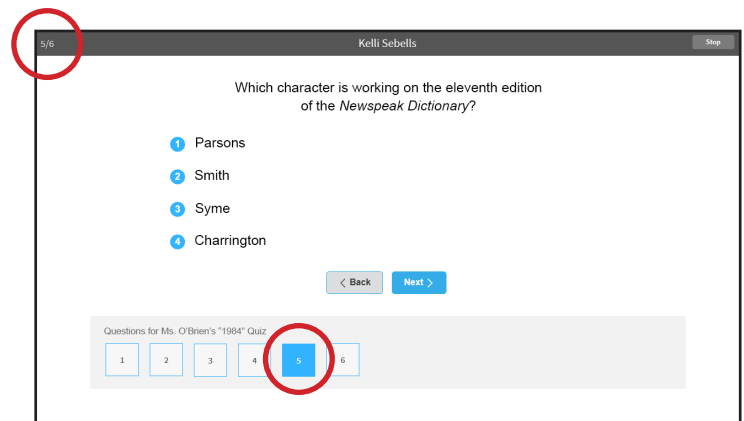
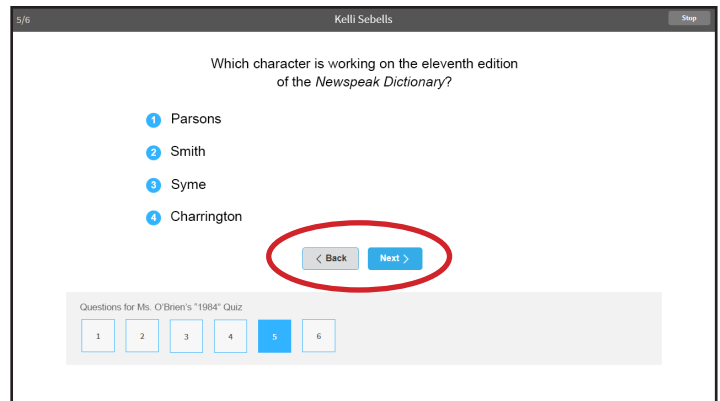
You can skip from one question to another and change your answers as often as you like before you finish the test.

- **Tablet:** Tap **< Back** to go back one question, or **Next >** to go ahead one question.
- **Mouse:** Click **< Back** to go back one question, or **Next >** to go ahead one question.

You can also jump to a specific question by using the numbered boxes at the bottom of the screen.

- **Tablet:** Tap on a numbered box to go to that question.
- **Mouse:** Click on a numbered box to go to that question.

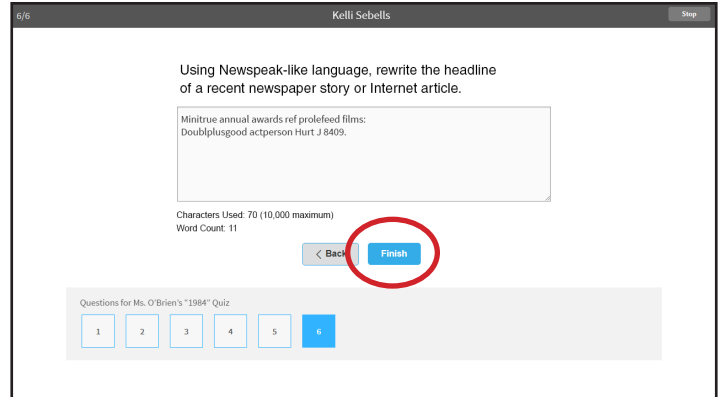
The number in the upper-left corner of the screen shows you which question you are on. The numbered box on the bottom also shows you which question you are on (the box is highlighted in blue).



Picture 4

When you are finished answering all the questions, go to the last question. On the screen where the last question is:

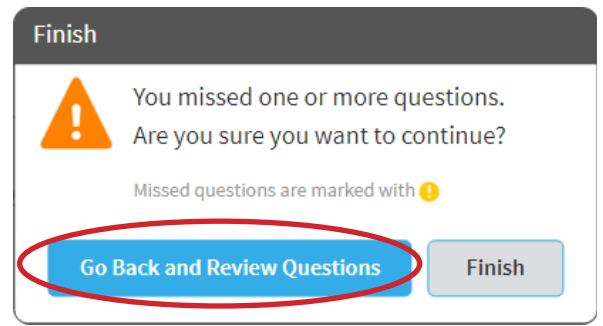
- **Tablet:** Tap **Finish** to enter your test answers.
- **Mouse:** Click **Finish** to enter your test answers.
- **Keyboard:** Press **Enter** or **return** to enter your test answers.



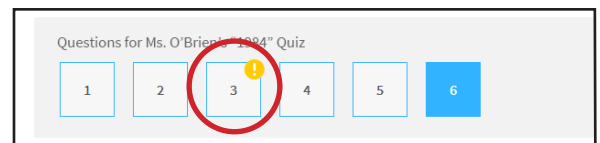
Picture 5

If you have forgotten to answer any questions, you will see this warning.

- **Tablet:** Tap **Go Back and Review Questions** to check the questions you did not answer, or tap **Finish** to enter your test answers.
- **Mouse:** Click **Go Back and Review Questions** to check the questions you did not answer, or click **Finish** to enter your test answers.



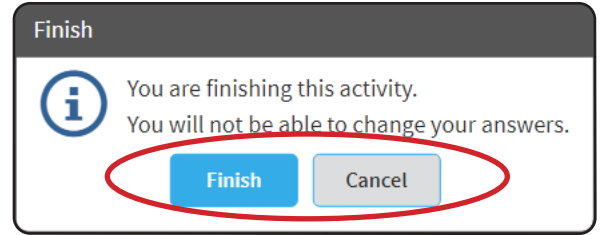
The numbered box for any questions you did not answer will have a yellow exclamation point in the upper-right corner. Tap or click the numbered box to go back to that question.



Picture 6

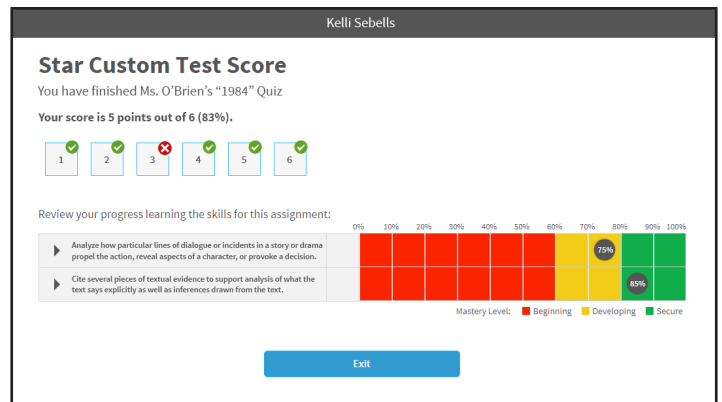
If you have answered all of the questions, you will see the following message.

- **Tablet:** Tap **Finish** to enter your answers and finish the test, or tap **Cancel** to return to the test and review or change your answers before entering them.
- **Mouse:** Click **Finish** to enter your answers and finish the test, or click **Cancel** to return to the test and review or change your answers before entering them.

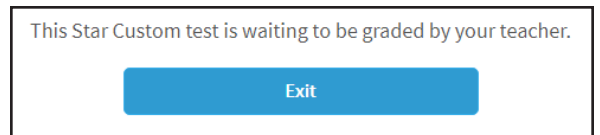


Picture 7

If you see a screen like this, your test has been automatically scored and you can review it. Your teacher can show you how to review your test questions.



If you see this message, your teacher needs to score one or more test items. The teacher will tell you when you can review your test. Tap or click **Exit**.

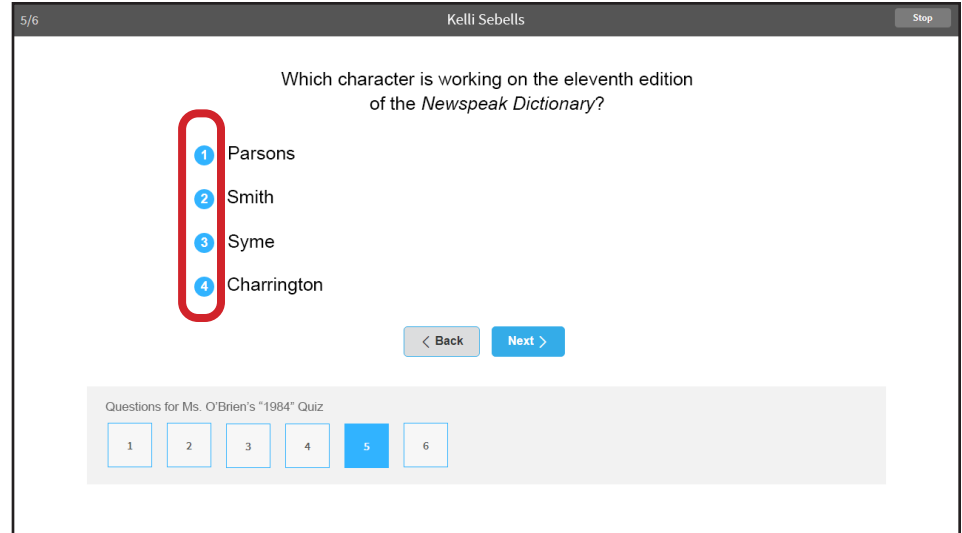


Picture 1

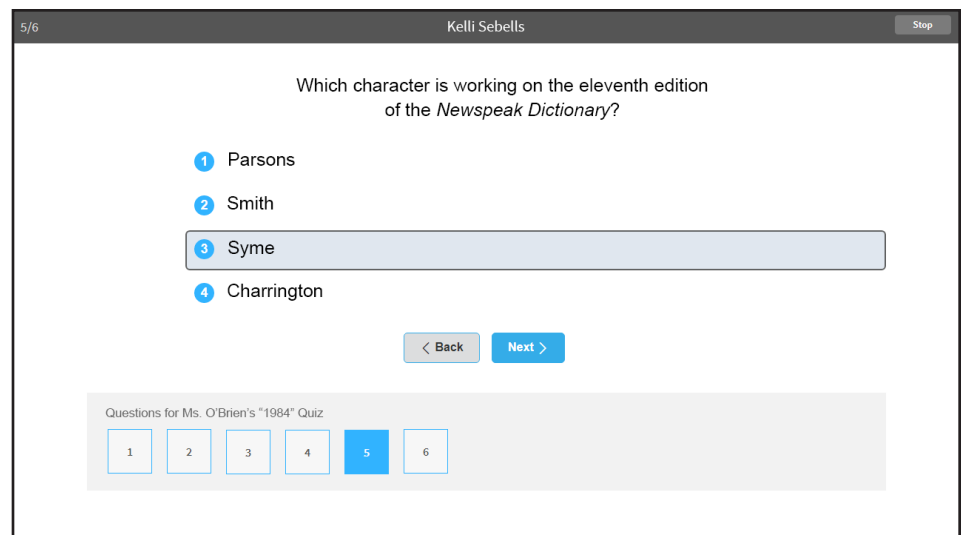
This is what a multiple-choice question looks like.

Read the text, and then select your answer from the responses listed.

- **Tablet:** Tap on the answer you have chosen.
- **Mouse:** Click on the answer you have chosen.
- **Keyboard:** Press the number (**1**, **2**, **3**, or **4**) that is next to the answer you have chosen.



Once you select an answer, it will be highlighted on the screen. This does *not* mean you have selected the correct answer; this only shows which answer you have selected.



Picture 2

This is what a constructed-response question looks like.

Read the text, and then type your answer in the blank space provided.

- **Tablet:** Use the tablet's on-screen keyboard to type your answer.
- **Keyboard:** Use the keyboard to type your answer.

2/6 Kelli Sebells Stop

Do you think Winston is a *hero*, or an *anti-hero*?
Describe an event in the story that influences your decision.

Characters Used: 0 (10,000 maximum)
Word Count: 0

< Back Next >

Questions for Ms. O'Brien's "1984" Quiz

1 2 3 4 5 6

2/6 Kelli Sebells Stop

Do you think Winston is a *hero*, or an *anti-hero*?
Describe an event in the story that influences your decision.

Winston is an anti-hero who loses his spirit and his humanity, which he fought so hard to keep. The event that shows this most clearly is his session in Room 101, when he begs his interrogators to torture Julia instead of him. In that instant, his burgeoning humanity is crushed in a wave of self-preservation, which transforms his character from hero to anti-hero.

Characters Used: 365 (10,000 maximum)
Word Count: 63

< Back Next >

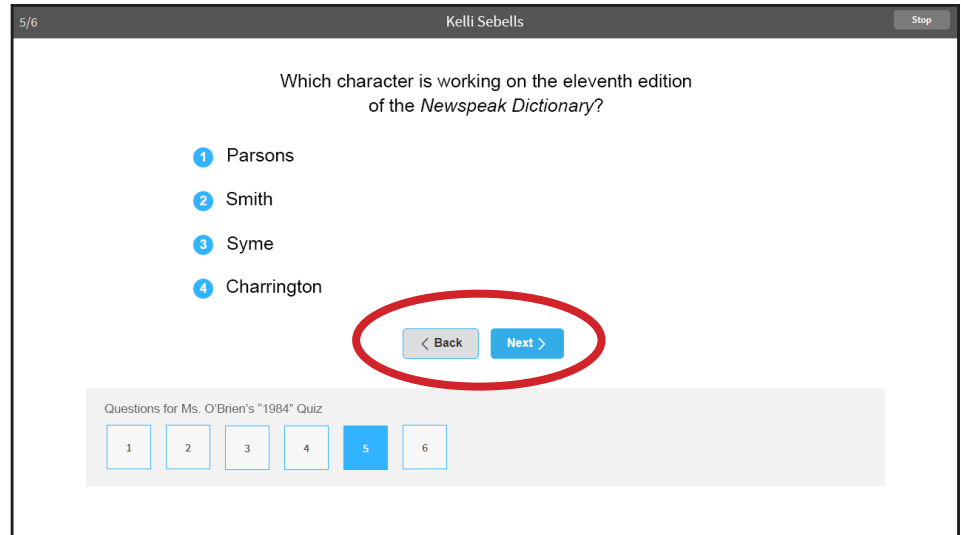
Questions for Ms. O'Brien's "1984" Quiz

1 2 3 4 5 6

Picture 3

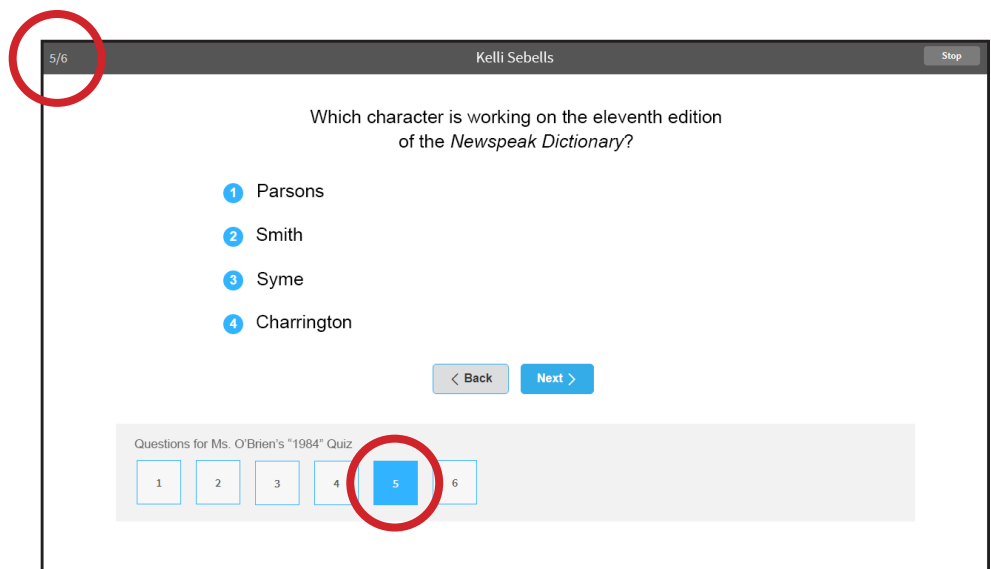
You can skip from one question to another and change your answers as often as you like before you finish the test.

- **Tablet:** Tap **< Back** to go back one question, or **Next >** to go ahead one question.
- **Mouse:** Click **< Back** to go back one question, or **Next >** to go ahead one question.



You can also jump to a specific question by using the numbered boxes at the bottom of the screen.

- **Tablet:** Tap on a numbered box to go to that question.
- **Mouse:** Click on a numbered box to go to that question.



The number in the upper-left corner of the screen shows you which question you are on. The numbered box on the bottom also shows you which question you are on (the box is highlighted in blue).

Picture 4

When you are finished answering all the questions, go to the last question.

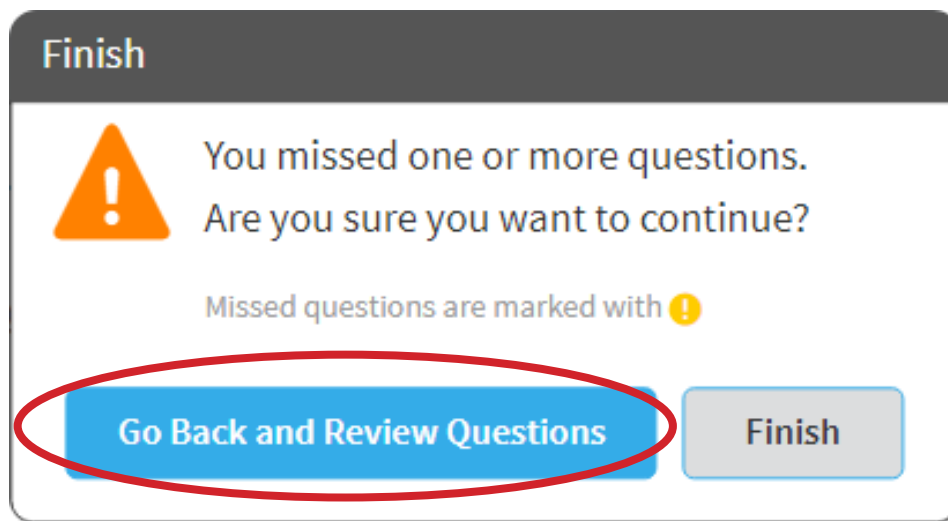
- **Tablet:** Tap **Finish** to enter your test answers.
- **Mouse:** Click **Finish** to enter your test answers.
- **Keyboard:** Press **Enter** or **return** to enter your test answers.

The screenshot shows a quiz interface for a user named Kelli Sebells. The question asks to rewrite a headline using Newspeak-like language. The original headline is: "Minitrue annual awards ref prolefeed films: Doublplusgood actperson Hurt J 8409." Below the text box, it shows "Characters Used: 70 (10,000 maximum)" and "Word Count: 11". At the bottom of the question area, there are two buttons: "< Back" and "Finish". The "Finish" button is circled in red. Below the question area, there is a progress bar titled "Questions for Ms. O'Brien's '1984' Quiz" with six numbered buttons. Buttons 1 through 5 are light blue, and button 6 is dark blue, indicating the current question.

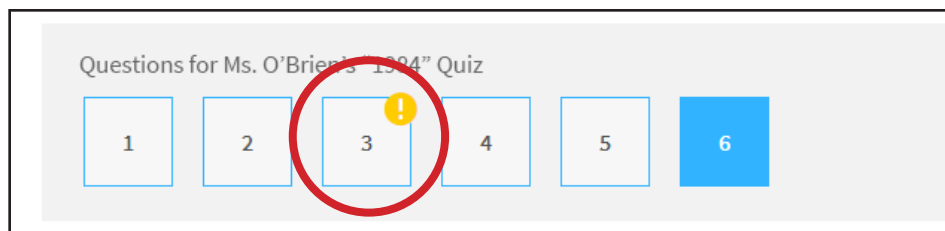
Picture 5

If you have forgotten to answer any questions, you will see this warning.

- **Tablet:** Tap **Go Back and Review Questions** to check the questions you did not answer, or tap **Finish** to enter your test answers.
- **Mouse:** Click **Go Back and Review Questions** to check the questions you did not answer, or click **Finish** to enter your test answers.



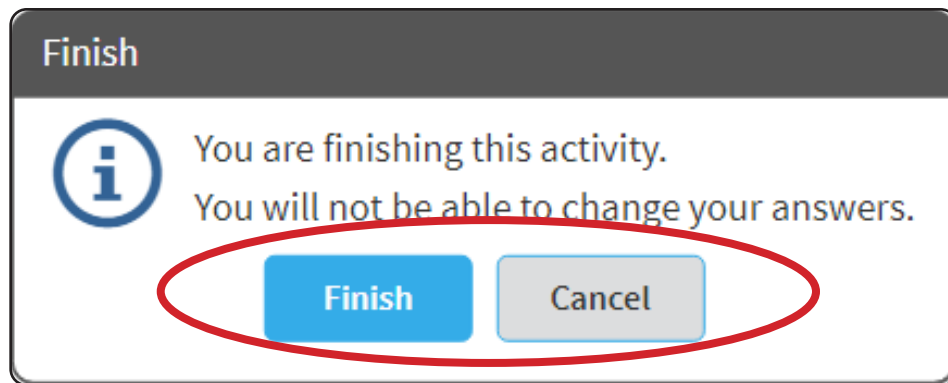
The numbered box for any questions you did not answer will have a yellow exclamation point in the upper-right corner. Tap or click the numbered box to go back to that question.



Picture 6

If you have answered all of the questions, you will see the following message.

- **Tablet:** Tap **Finish** to enter your answers and finish the test, or tap **Cancel** to return to the test and review or change your answers before entering them.
- **Mouse:** Click **Finish** to enter your answers and finish the test, or click **Cancel** to return to the test and review or change your answers before entering them.



Picture 7

If you see a screen like this, your test has been automatically scored and you can review it. Your teacher can show you how to review your test questions.

Kelli Sebells

Star Custom Test Score

You have finished Ms. O'Brien's "1984" Quiz

Your score is 5 points out of 6 (83%).

1 ✓ 2 ✓ 3 ✗ 4 ✓ 5 ✓ 6 ✓

Review your progress learning the skills for this assignment:

	0%	10%	20%	30%	40%	50%	60%	70%	80%	90%	100%
Analyze how particular lines of dialogue or incidents in a story or drama propel the action, reveal aspects of a character, or provoke a decision.	Beginning	Beginning	Beginning	Beginning	Beginning	Beginning	Beginning	Developing	75%	Secure	Secure
Cite several pieces of textual evidence to support analysis of what the text says explicitly as well as inferences drawn from the text.	Beginning	Beginning	Beginning	Beginning	Beginning	Beginning	Developing	85%	Secure	Secure	Secure

Mastery Level: Beginning Developing Secure

Exit

If you see this message, your teacher needs to score one or more test items. The teacher will tell you when you can review your test. Tap or click **Exit**.

This Star Custom test is waiting to be graded by your teacher.

Exit